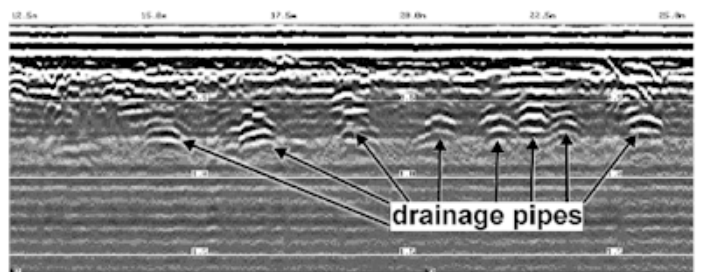
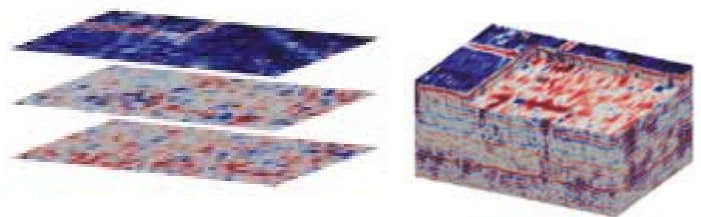


SUBSURFACE INVESTIGATION

Need to know what lies below?...

Utilities? Process Systems? Underground tanks or structures? If you need to know what's under your site, and precisely where it's located, Dearborn can provide you with immediate answers. Utilizing state-of-the-art Ground Penetrating Radar (GPR), and sophisticated modeling software, we provide you with a high quality 3D site map from a "worm's eye view".

- Detects and precisely locates metallic and *non-metallic* objects below the ground:
 - Pipe, conduit and cable
 - Drums and storage tanks
 - PVC, concrete and vitrified clay pipe
 - Fiber optic cable
 - Concrete structures
 - Archeological artifacts and ruins
 - Graves and forensic evidence
- Provides a "virtual dig" in advance of disturbing the ground - faster, less costly than other technologies
- Safety "best practice" - helps protect equipment operators and drillers from accidental electrocution, fire and explosion
- Business "best practice" - helps protect against damage to property and economic losses due to utility damage and interruption
- Safe for use in all locations
- 3D results - on-site and in real-time, providing highly accurate locations, *including depth of bury!*



GROUND PENETRATING RADAR

When you need to know what lies below...

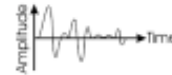
With its **Ground Penetrating Radar (GPR)** systems, Dearborn possesses the Superman-like ability to see through the ground and concrete structures, precisely locating metallic and *nonmetallic* objects. Dearborn conducts a “virtual dig”, ahead of the shovels, trenchers, concrete saws and coring machines, saving you time, money, and most importantly, avoiding disaster.

If hindsight is 20/20, foresight is off the charts!

Nondestructive Inspection Applications:

- Concrete - Delineation of Voids & Embedments
- Roadway & Runway Pavements
- Bridgedecks
- Railway Ballast & Base-Course Materials
- Buried Utilities
- Subsurface Utility Engineering (SUE)
- Geotechnical & Environmental Investigations
- Archeology, Mining & Quarrying
- Agriculture & Bio-Monitoring
- Forensics & Crime Scene Investigations
- Surveillance & Security
- Landmine & Unexploded Ordinance (UXO) Detection

GPR - How does it work?



- Emits energy pulse into the ground
- “Ground” can be anything non-metallic (soil, rock, wood, concrete)
- Records echoes of reflected energy pulses
- Collects data and builds 3D image from echoes



Dearborn Engineers & Constructors, Inc.
74 71 West 93rd Street
Bridgeview, IL USA 60455-2139
P: 708.430.7600
F: 708.430.5094
www.DearbornCos.com

